



AMERICAN CONSTRUCTION METALS

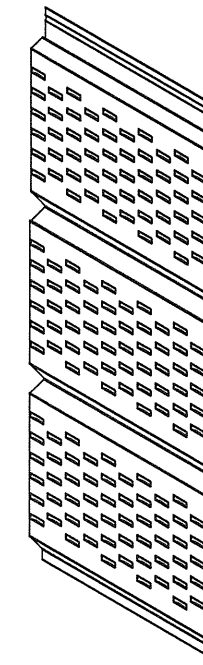
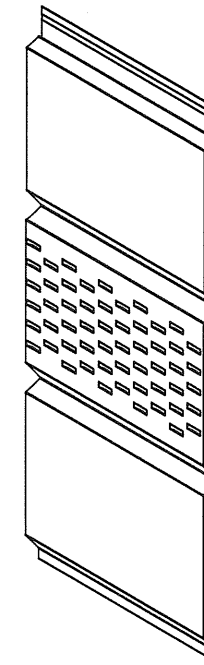
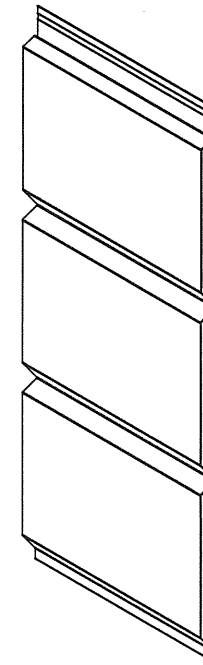
5140 West Clifton Street
Tampa, Fl. 33634

"TRIPLE 4" & "QUAD 4" ALUMINUM SOFFIT

GENERAL NOTES

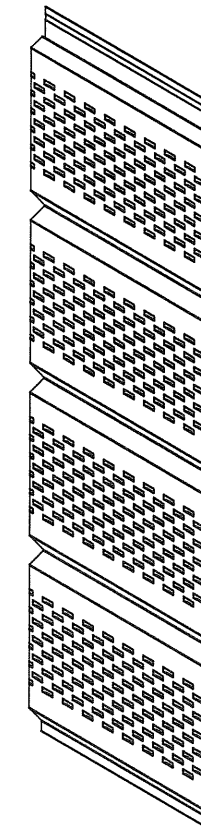
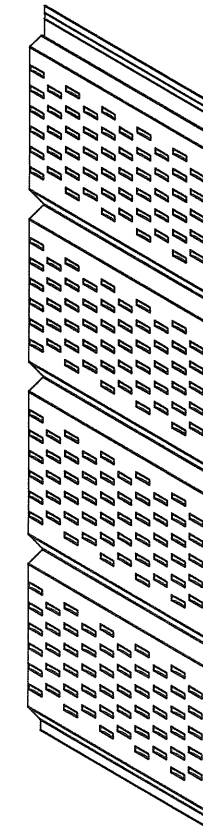
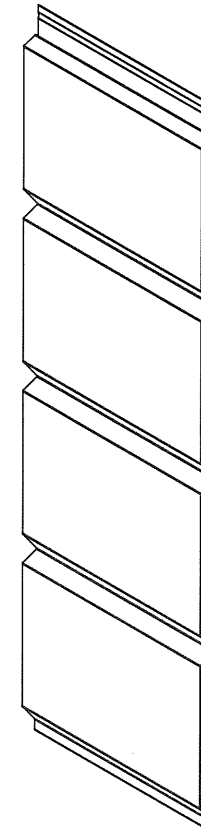
1. THIS PRODUCT HAS BEEN EVALUATED AND IS IN COMPLIANCE WITH THE 2007 FLORIDA BUILDING CODE EXCLUDING THE "HIGH VELOCITY HURRICANE ZONE".
2. PRODUCT ANCHORS SHALL BE AS LISTED AND SPACED AS SHOWN ON DETAILS. ANCHOR EMBEDMENT TO BASE MATERIAL SHALL BE BEYOND WALL DRESSING OR STUCCO.
3. SITE CONDITIONS NOT COVERED BY THIS DRAWING ARE SUBJECT TO FURTHER ENGINEERING ANALYSIS.
4. WOOD/CMU WALL CONSTRUCTION, BY OTHERS, MUST BE DESIGNED PROPERLY TO RECEIVE LOADS FROM THE SOFFIT AND/OR 2" X 2" BATTEN STRIPS.

TABLE OF CONTENTS	
SHEET #	DESCRIPTION
1	Typical elevations, & general notes
2	Panel detail
3	Soffit detail and design pressures
4	Soffit detail and design pressures
5	Soffit detail, design pressures and bill of materials



TRIPLE 4 (T4)

T-4-012 (.0115" THICK)
T-4-014 (.0135" THICK)



QUAD 4 (Q4)

Q-4-012 (.0115" THICK)
Q-4-014 (.0135" THICK)

Documents Prepared By:

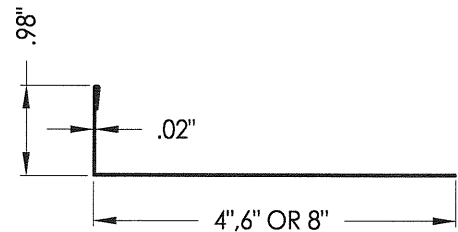
RW BUILDING CONSULTANTS, INC.
P.O. Box 230 Valrico FL 33595
Phone No.: 813.659.9197
Florida Board of Professional Engineers
Certificate Of Authorization No. 9813
LFS 5707
Lyndon F. Schmidt, P.E. No. 43409

PRODUCT: ALUMINUM SOFFIT
PART OR ASSEMBLY: TYPICAL ELEVATIONS AND GENERAL NOTES

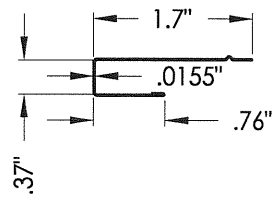
NO.	DATE	ADD DETAILS	JK	BY
1	3/31/09			

DATE: 1/9/09
SCALE: N.T.S.
DWG. BY: JK
CHK. BY: LFS
DRAWING NO.: FL-12019.1
SHEET 1 OF 5

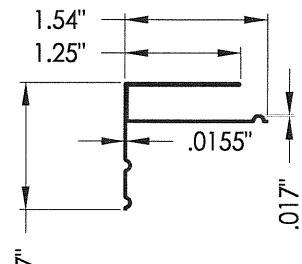
SOFFIT AIR FLOW TABLE							
SOFFIT TYPE		AIR FLOW		SOFFIT TYPE		AIR FLOW	
		FREE FLOW AREA SQ-IN/SQ-FT	% FREE FLOW AREA			FREE FLOW AREA SQ-IN/SQ-FT	% FREE FLOW AREA
Triple 4	CENTER VENT NARROW PATTERN	3.91	2.71%	Quad 4	FULL VENT NARROW PATTERN	11.74	8.15%
	FULL VENT NARROW PATTERN	11.74	8.15%		FULL VENT WIDE PATTERN	3.69	2.56%
	FULL VENT WIDE PATTERN	3.69	2.56%		FULL VENT WIDE PATTERN	3.69	2.56%



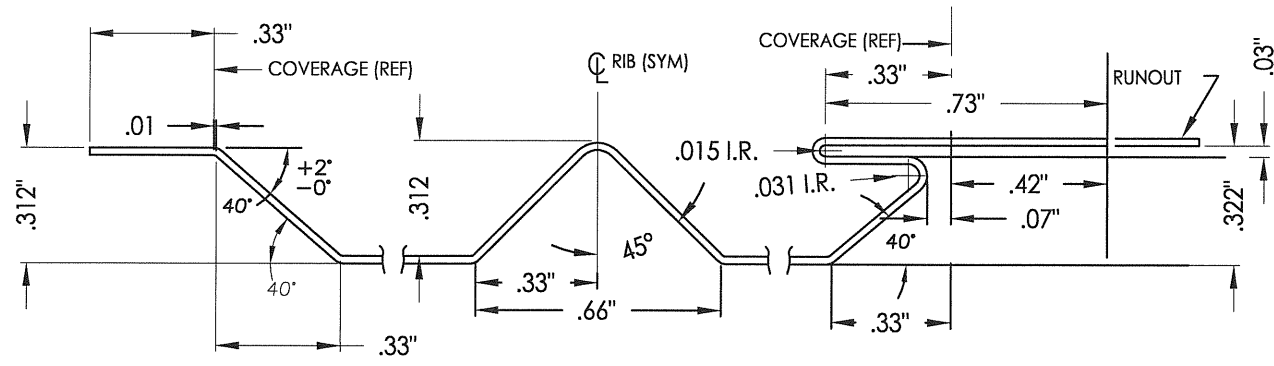
1 FASCIA
Aluminum



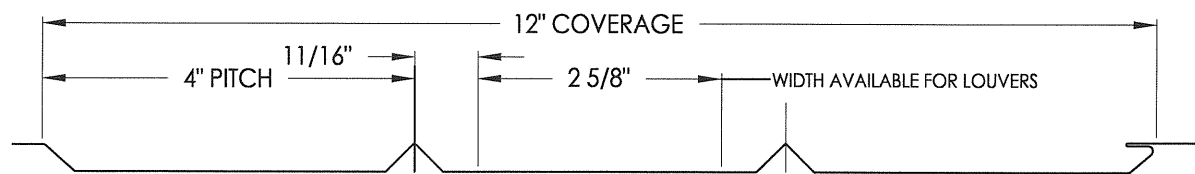
2 "J" CHANNEL
Aluminum



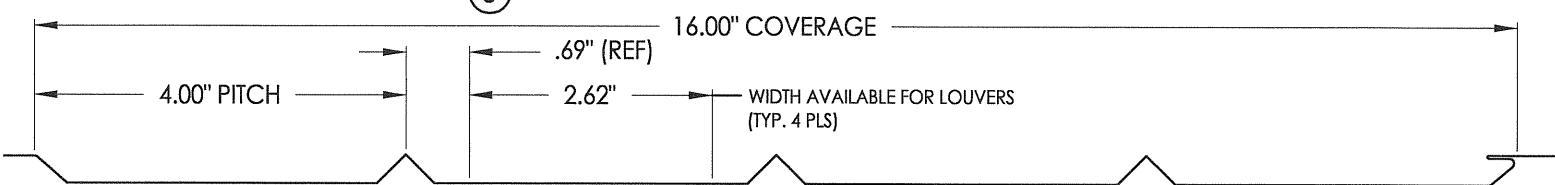
3 "F" CHANNEL
Aluminum



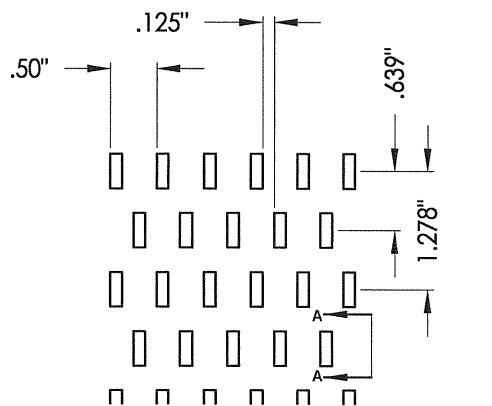
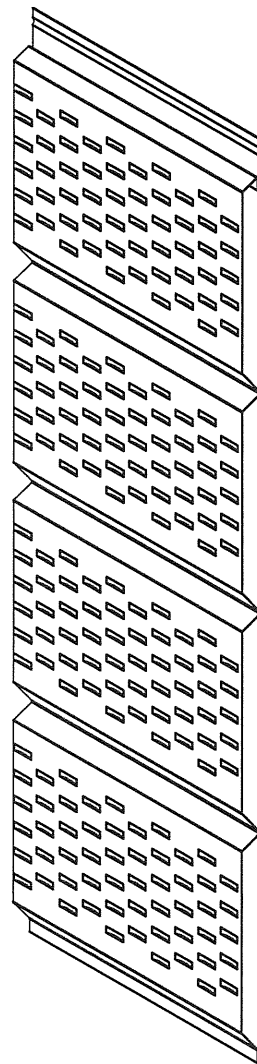
RIB AND END DETAILS



6 TRIPLE 4 PANEL

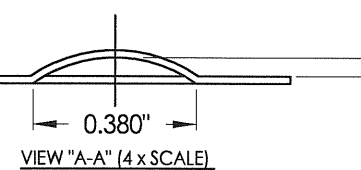


5 QUAD 4 PANEL

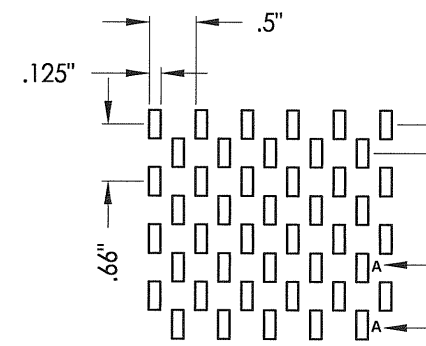


LOUVER PATTERN (FULL SCALE)
(LOUVERS FORMED IN SAME DIRECTION AS RIBS)

5 6 FULL VENT - WIDE PATTERN
(Louvers formed in same direction as ribs)

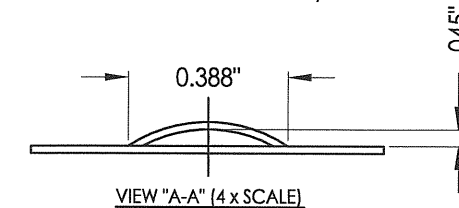


VIEW "A-A" (4x SCALE)

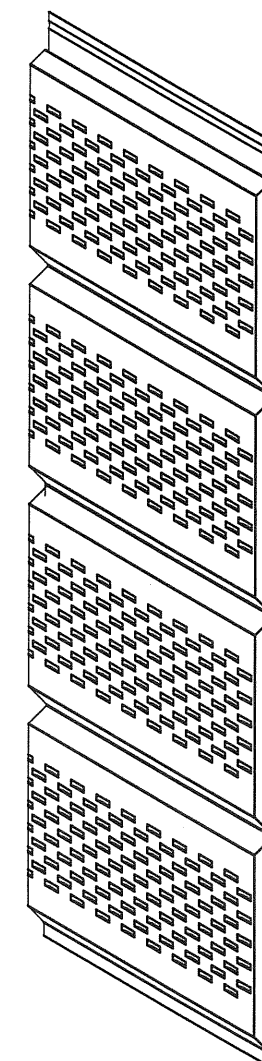


LOUVER PATTERN
(LOUVERS FORMED IN SAME DIRECTION AS RIBS)

5 6 FULL VENT - NARROW VENT PATTERN
(Louvers formed in same direction as ribs)



VIEW "A-A" (4x SCALE)



Documents Prepared By:

RW BUILDING CONSULTANTS, INC.
P.O. Box 230 Valrico FL 33595
Phone No.: 813.659.9197
Florida Board of Professional Engineers
Certificate Of Authorization No. 9813
7-2-5-7-09
Lyndon F. Schmidt, P.E. No. 43409

PRODUCT: ALUMINUM SOFFIT

PART OR ASSEMBLY:

PANEL DETAILS

NO.	DATE	ADD DETAILS	BY
1	3/31/09		JK

DATE: 01/01/09

SCALE: N.T.S.

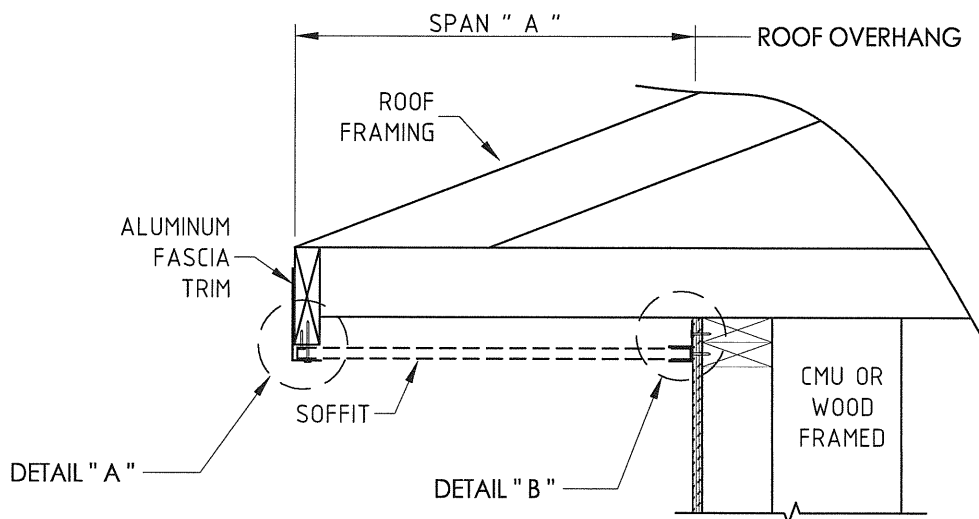
DWG. BY: JK

CHK. BY: LFS

DRAWING NO.:

FL-12019.1

SHEET 2 OF 5

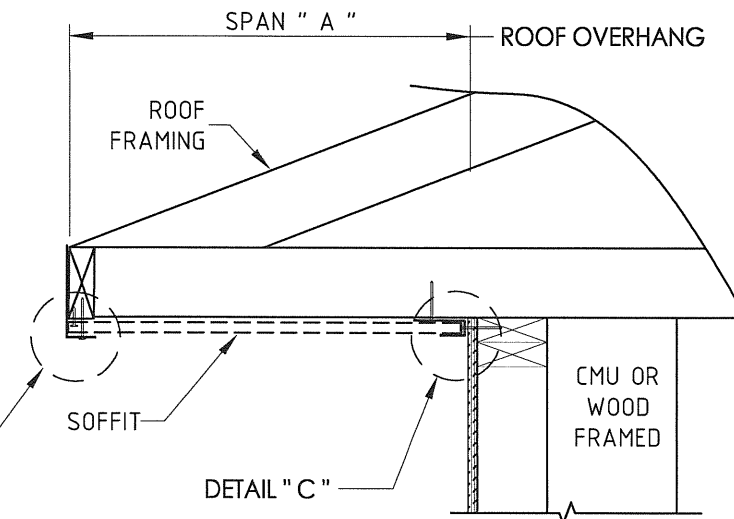


SIDE VIEW - SINGLE SPAN W/F-CHANNEL

(Shown w/ truss/framing cantilever)

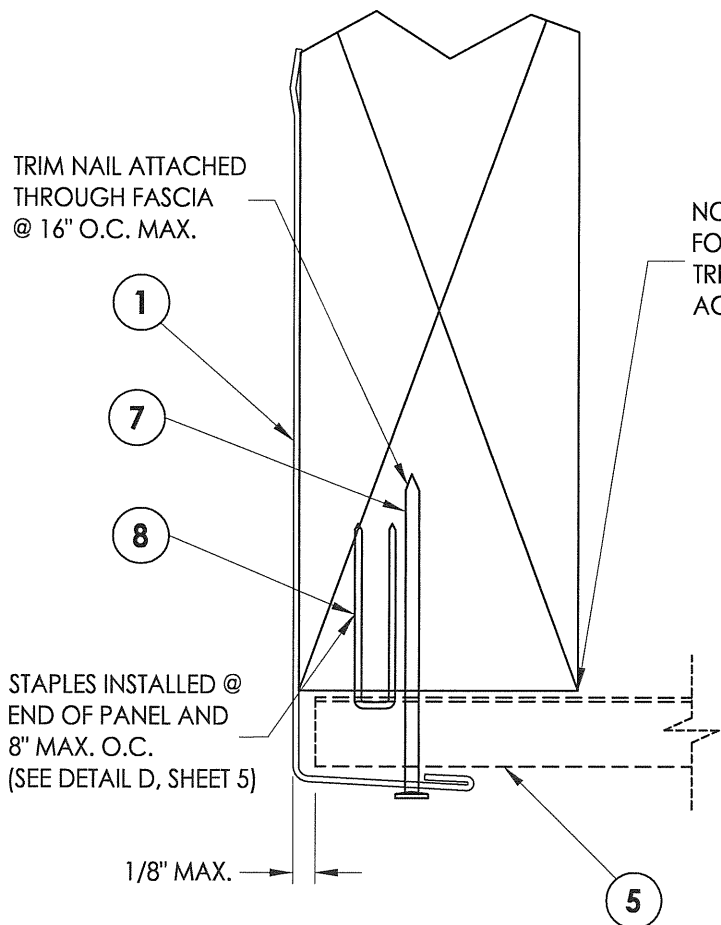
SINGLE SPAN LENGTH "A"	DESIGN PRESSURE (PSF)	
	POSITIVE	NEGATIVE
8"	+70.0	-141.0
10"	+60.0	-60.0
12"	+50.0	-50.0
14"	+38.5	-38.5
16"	+30.0	-30.0

NOTE: WOOD FRAMING AND CONNECTIONS TO BE DESIGNED BY THE ARCHITECT OR ENGINEER OF RECORD



SIDE VIEW - SINGLE SPAN W/J-CHANNEL

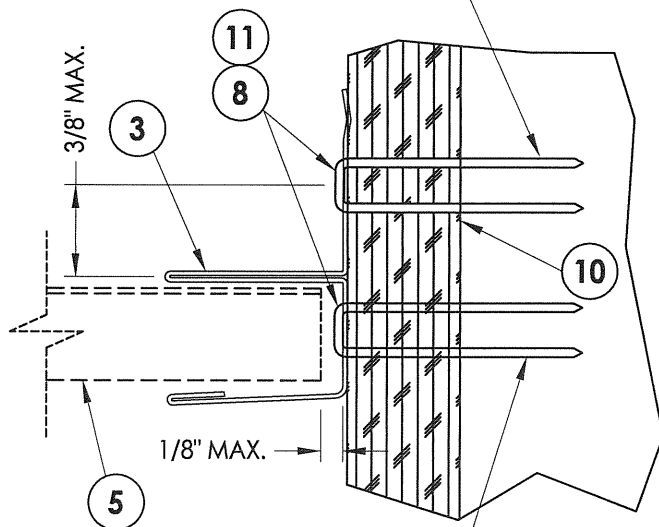
(Shown w/ truss/framing cantilever)



DETAIL " A "
Fascia

STAPLES INSTALLED @ 24" O.C. (INTO WOOD) ON F-CHANNEL LEG OR T-NAIL @ 12" O.C. (INTO WOOD OR MASONRY)

NOTE: FOR SQUARE CUT OVERHANG, TRIM BOTTOM OF FASCIA FLAT AGAINST PANEL

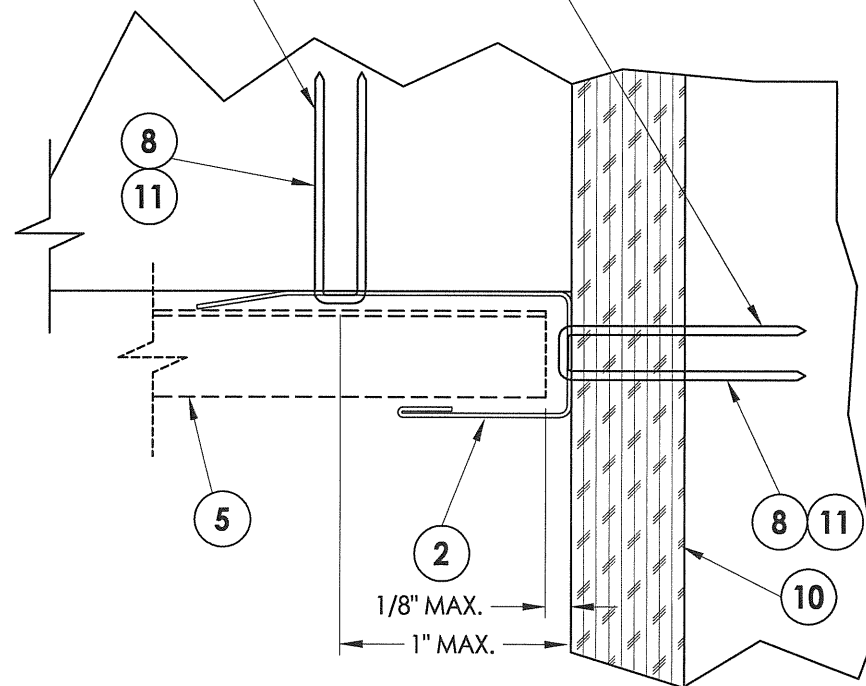


DETAIL " B "
F-Channel

STAPLES INSTALLED @ 12" O.C. (INTO WOOD) IN F-CHANNEL SLOT OR T-NAIL @ 12" O.C. (INTO WOOD OR MASONRY)

STAPLES INSTALLED @ 12" O.C. (INTO WOOD) IN J-CHANNEL SLOT OR T-NAIL @ 12" O.C. (INTO WOOD OR MASONRY)

STAPLES LOCATED 24" O.C. INTO FRAMING



DETAIL " C "
J-Channel

Documents Prepared By: **R.W. BUILDING CONSULTANTS, INC.**
P.O. Box 230 Valrico FL, 33595
Phone No.: 813.659.9197
Florida Board of Professional Engineers
Certificate of Authorization No. 9813
LS-DE 5-7-09
Lyndon F. Schmidt, P.E. No. 43409

PRODUCT: **ALUMINUM SOFFIT**

PART OR ASSEMBLY: **SOFFIT DETAIL AND DESIGN PRESSURES**

NO.	DATE	ADD DETAILS	JK	BY
1	3/31/09			

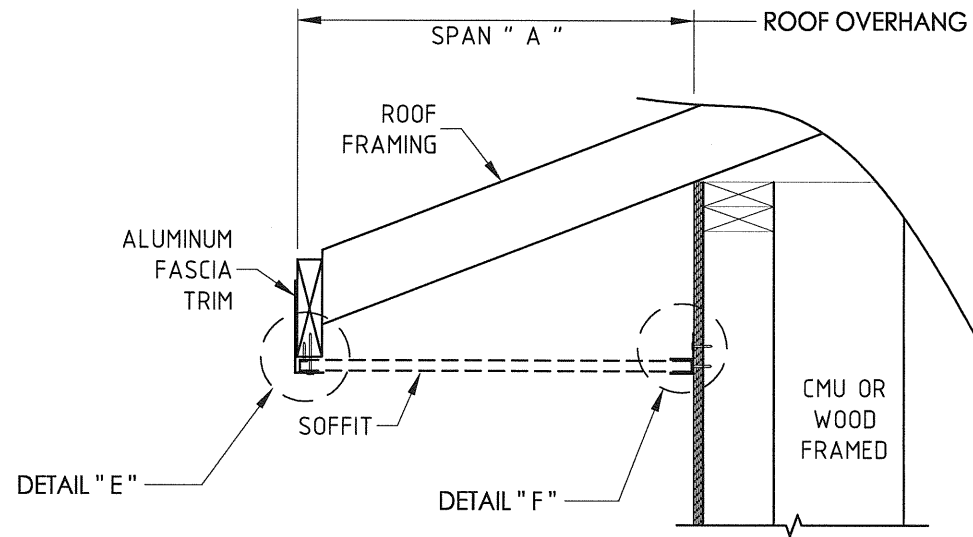
REVISIONS

DATE: 1/9/09
SCALE: N.T.S.
DWG. BY: JK
CHK. BY: LFS
DRAWING NO.: FL-12019.1
SHEET 3 of 5

© 2009 R.W. BUILDING CONSULTANTS INC.

R:\A - Projects\Project Folders\proj 1401-1500\PF 1463\ID. RWBC Drawings\FL-12019.dwg, 1-3

R:\A - Projects\Project Folders\proj 1401-1500\PF 1463\ID - RWBC Drawings\FL-12019.dwg, 1-4

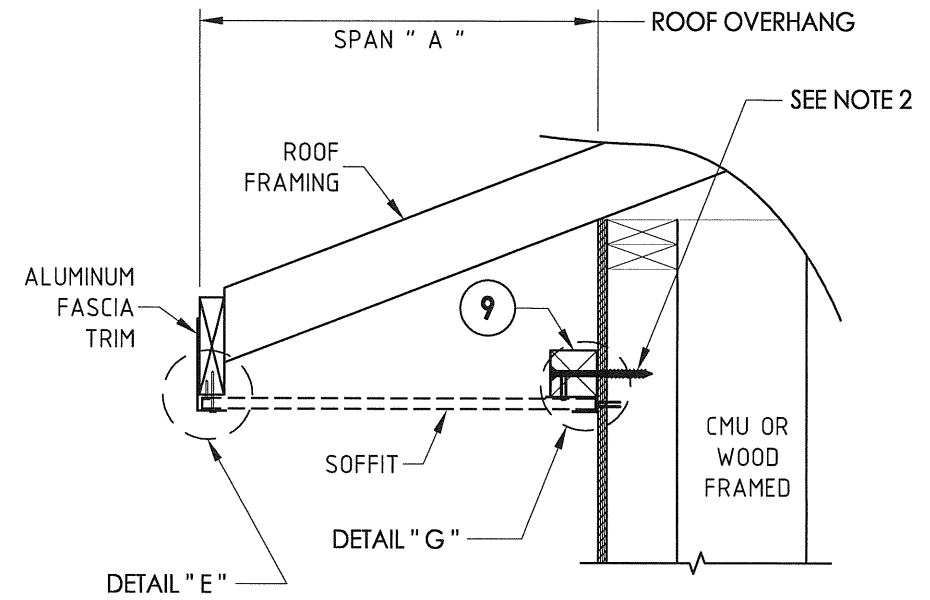


SIDE VIEW - SINGLE SPAN W/F-CHANNEL

(Shown w/ truss/framing overhang)

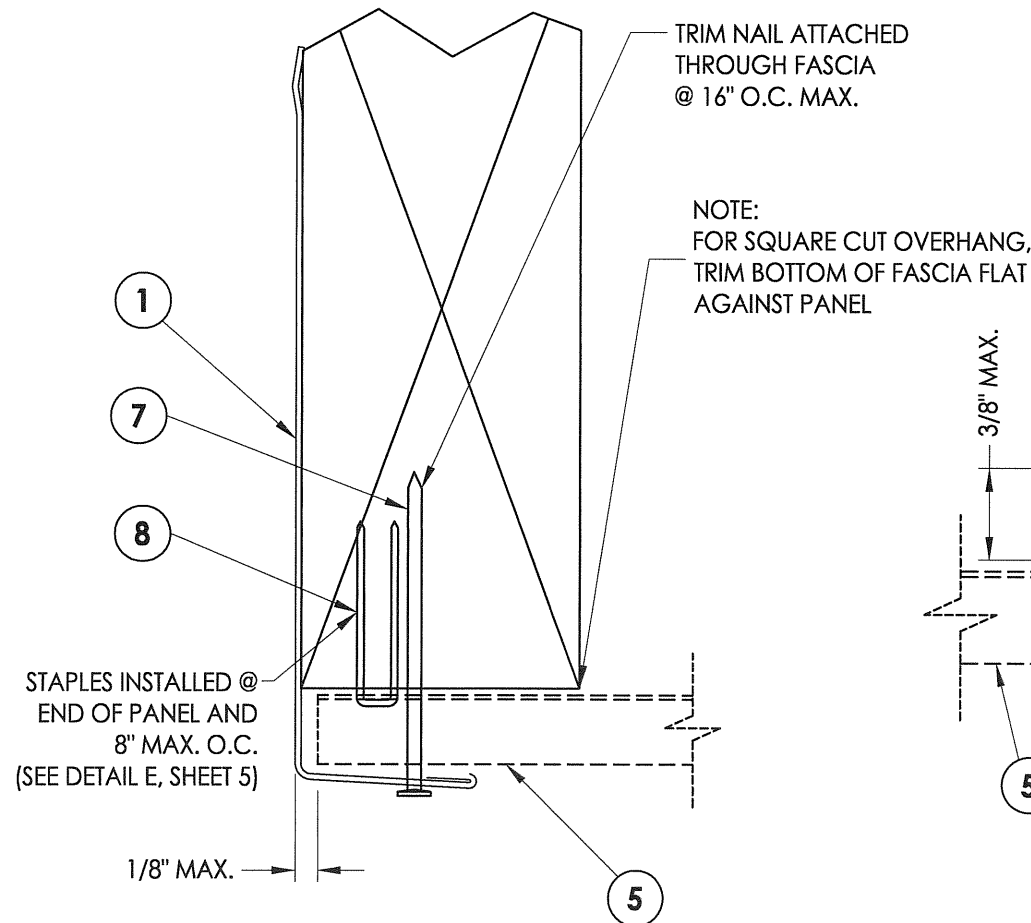
SINGLE SPAN LENGTH "A"	DESIGN PRESSURE (PSF)	
	POSITIVE	NEGATIVE
8"	+70.0	-141.0
10"	+60.0	-60.0
12"	+50.0	-50.0
14"	+38.5	-38.5
16"	+30.0	-30.0

NOTE:
 1. WOOD FRAMING AND CONNECTIONS TO BE DESIGNED BY THE ARCHITECT OR ENGINEER OF RECORD
 2. 12d COMMON NAIL OR 3/16" ITW CONCRETE SCREW (MIN. 1-1/4" EMBEDMENT) @ 24" ON CENTER



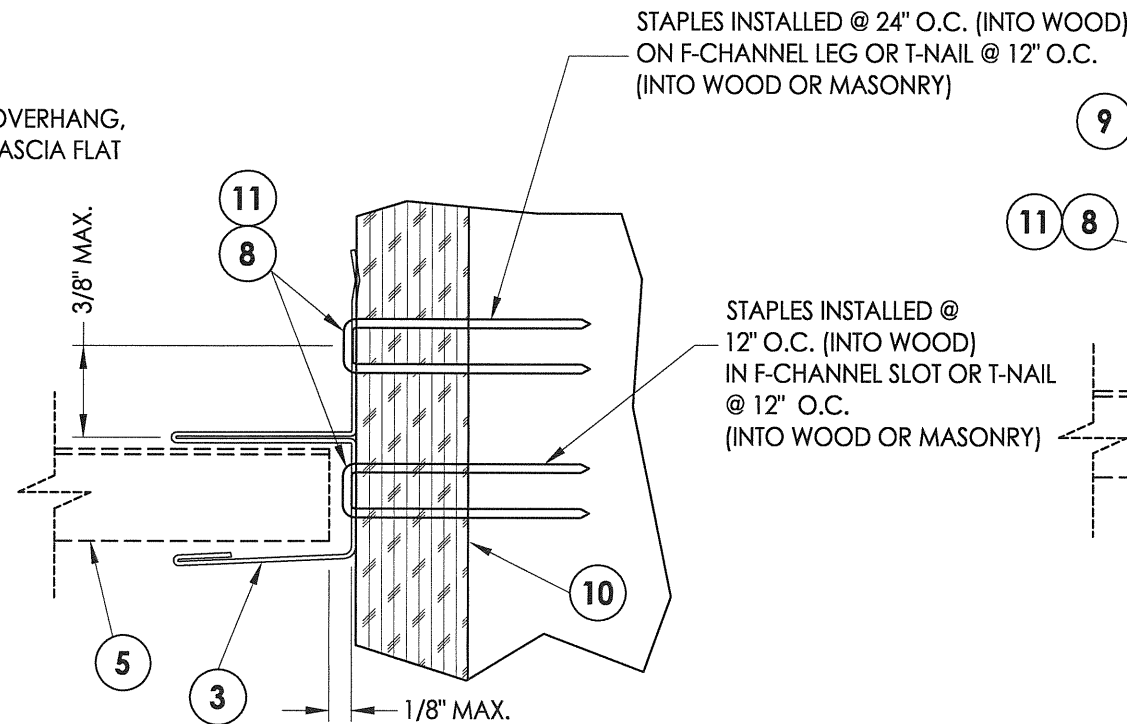
SIDE VIEW - SINGLE SPAN W/J-CHANNEL

(Shown w/ truss/framing overhang)



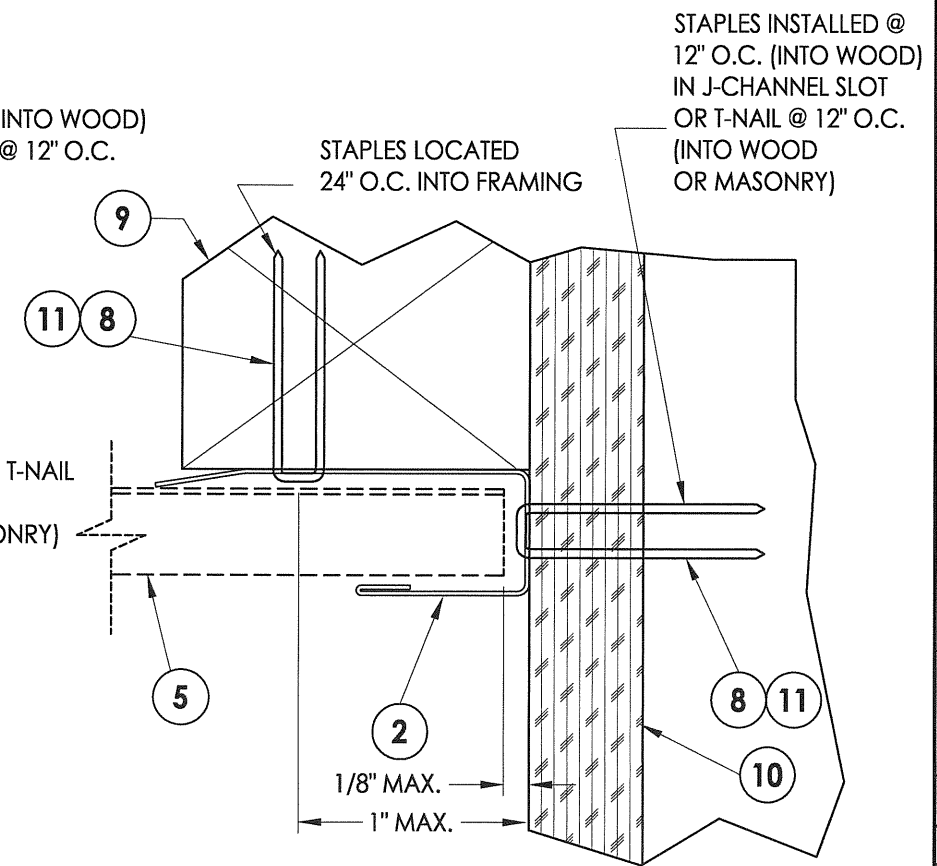
DETAIL " E "

Fascia



DETAIL " F "

F-Channel



DETAIL " G "

J-Channel

Documents Prepared By: **RW** BUILDING CONSULTANTS, INC.
 P.O. Box 230 Valrico FL, 33595
 Phone No.: 813.659.9197
 Florida Board of Professional Engineers
 Certificate Of Authorization No. 9813
 Lyndon F. Schmidt, P.E. No. 43409

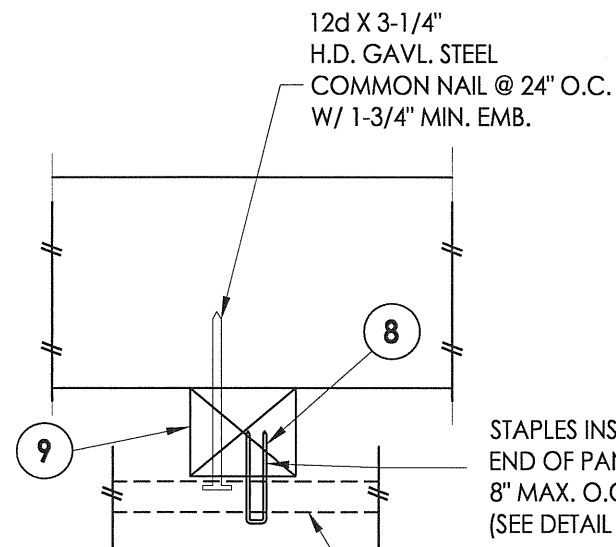
PRODUCT:	ALUMINUM SOFFIT			
PART OR ASSEMBLY:	SOFFIT DETAIL AND DESIGN PRESSURES			
NO.	DATE	ADD DETAILS	JK	BY
1	3/31/09			

REVISIONS

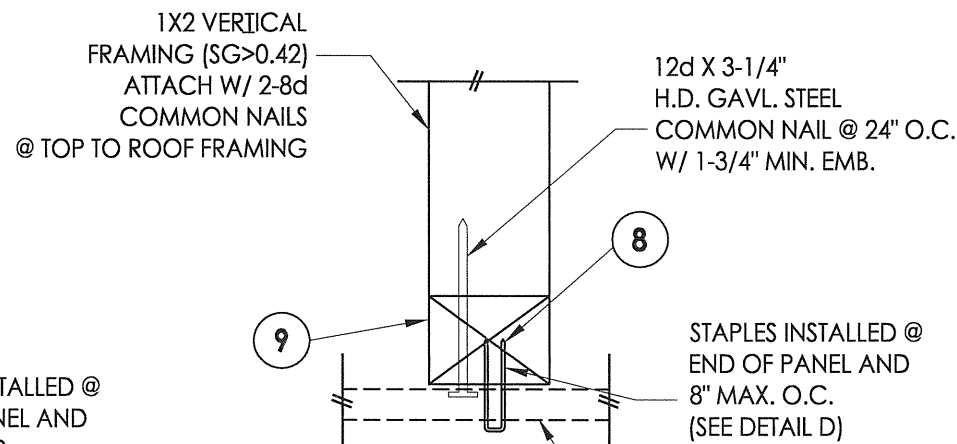
DATE: 1/9/09
 SCALE: N.T.S.
 DWG. BY: JK
 CHK. BY: LFS
 DRAWING NO.: FL-12019.1
 SHEET 4 OF 5

© 2009 R.W. BUILDING CONSULTANTS INC.

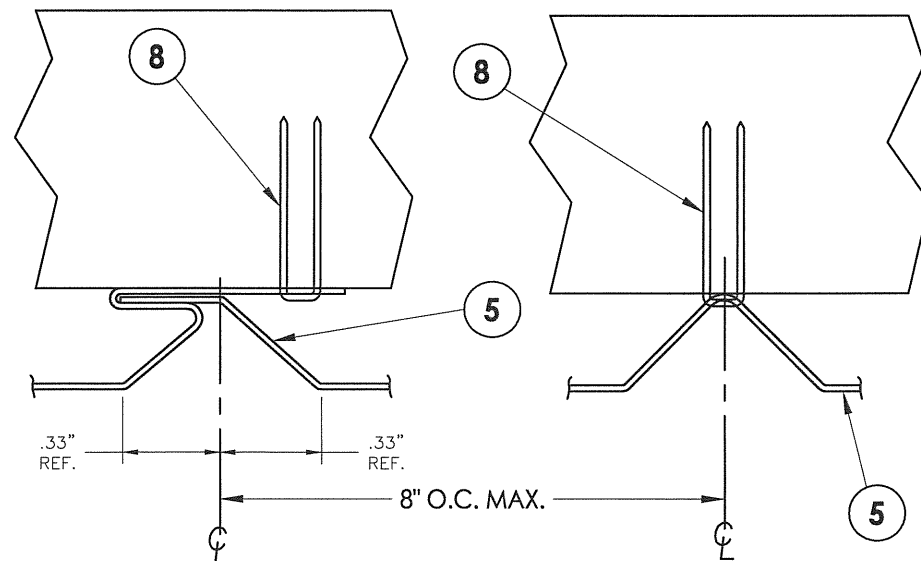
ITEM	DESCRIPTION	MATERIAL
1	FASCIA .0215" THK. AL. 3105 - H14	ALUMINUM
2	"J" CHANNEL .0155" THK. AL. 3105 - H24	ALUMINUM
3	"F" CHANNEL .0155" THK. AL. 3104 - H19	ALUMINUM
5	QUAD 4 PANEL (.0115 OR .0135" THICK) AL. 3105	ALUMINUM
6	TRIPLE 4 PANEL (.0115 OR .0135" THICK) AL. 3105	ALUMINUM
7	#15 x 1-3/4" TRIM NAIL	S.S.
8	18" GA. X 1/4" SS STAPLE (W/ 7/8" MIN. EMBEDMENT)	STEEL
9	2" X 2" BATTEN STRIP SG=.42 OR BETTER	WOOD
10	APA B-C- GROUP 1 EXT. 15/32" PLYWOOD OR BETTER	WOOD
11	.097" DIA. T-NAIL (W/ 5/8" MIN. EMBEDMENT)	STEEL



DETAIL "H"



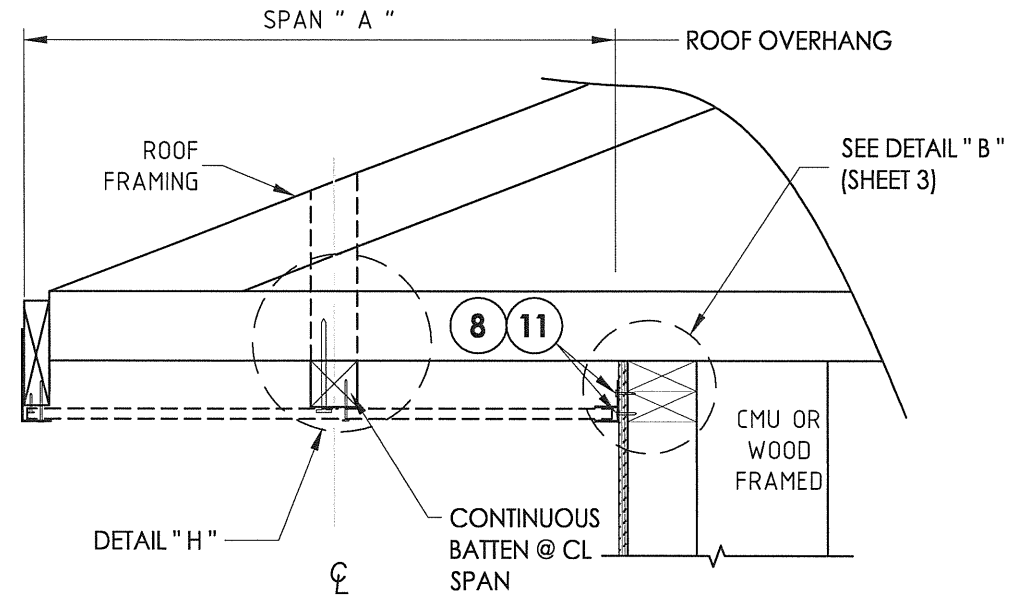
DETAIL "I"



DETAIL "D"

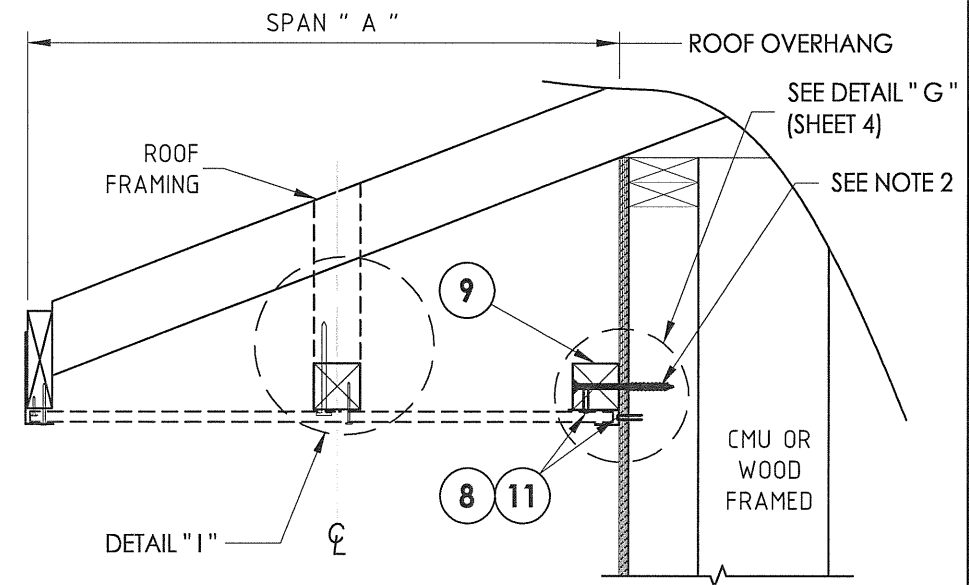
TWIN SPAN LENGTH W/CONTINUOUS BATTEN "A"	DESIGN PRESSURE (PSF)	
	POSITIVE	NEGATIVE
16"	+70.0	-70.0
18"	+66.5	-66.5
20"	+60.0	-60.0
22"	+54.5	-54.5
24"	+50.0	-50.0

- NOTE:
- WOOD FRAMING AND CONNECTIONS TO BE DESIGNED BY THE ARCHITECT OR ENGINEER OF RECORD
 - 12d COMMON NAIL OR 3/16" ITW CONCRETE SCREW (MIN. 1-1/4" EMBEDMENT) @ 24" ON CENTER



SIDE VIEW - DOUBLE SPAN W/BATTEN

(Shown w/ truss/framing cantilever)



SIDE VIEW - DOUBLE SPAN W/BATTEN

(Shown w/ truss/framing overhang)

Documents Prepared By:

RW BUILDING CONSULTANTS, INC.
P.O. Box 230 Vairico FL 33595
Phone No.: 813.659.9197
Florida Board of Professional Engineers
Certificate of Authorization No. 9813
17-DE-5-7-09
Lyndon F. Schmidt, P.E. No. 43409

PRODUCT: ALUMINUM SOFFIT

PART OR ASSEMBLY: SOFFIT DETAIL, DESIGN PRESSURES & BILL OF MATERIALS

NO. DATE

1 3/31/09 ADD DETAILS

JK BY

REVISIONS

DATE: 1/9/09

SCALE: N.T.S.

DWG. BY: JK

CHK. BY: LFS

DRAWING NO.:

FL-12019.1

SHEET 5 OF 5